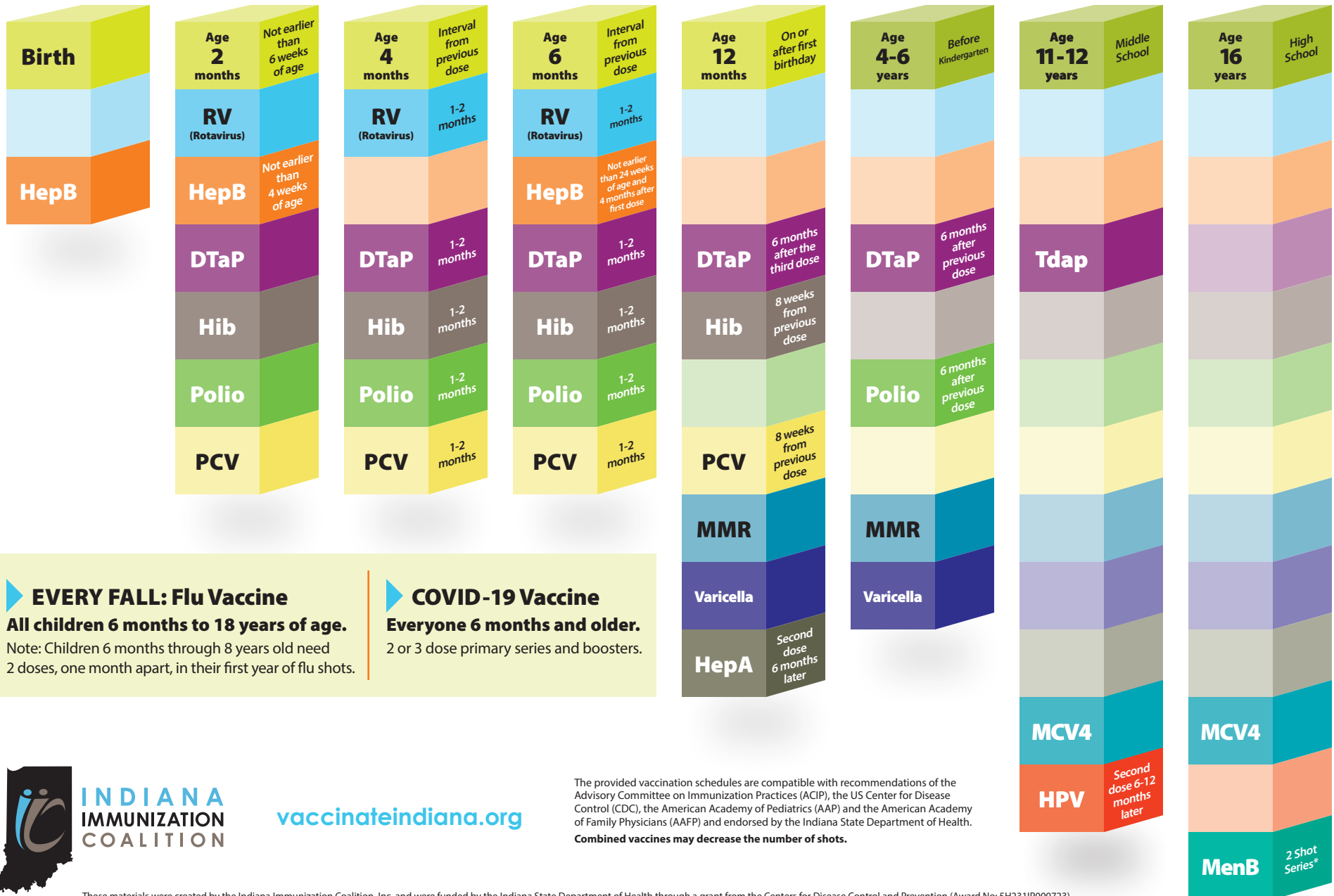


# GET THEM IN ON TIME

## Vaccination Schedules — Birth–16 years



**▶ EVERY FALL: Flu Vaccine**  
**All children 6 months to 18 years of age.**  
 Note: Children 6 months through 8 years old need 2 doses, one month apart, in their first year of flu shots.

**▶ COVID-19 Vaccine**  
**Everyone 6 months and older.**  
 2 or 3 dose primary series and boosters.



[vaccinateindiana.org](http://vaccinateindiana.org)

The provided vaccination schedules are compatible with recommendations of the Advisory Committee on Immunization Practices (ACIP), the US Center for Disease Control (CDC), the American Academy of Pediatrics (AAP) and the American Academy of Family Physicians (AAFP) and endorsed by the Indiana State Department of Health.  
**Combined vaccines may decrease the number of shots.**